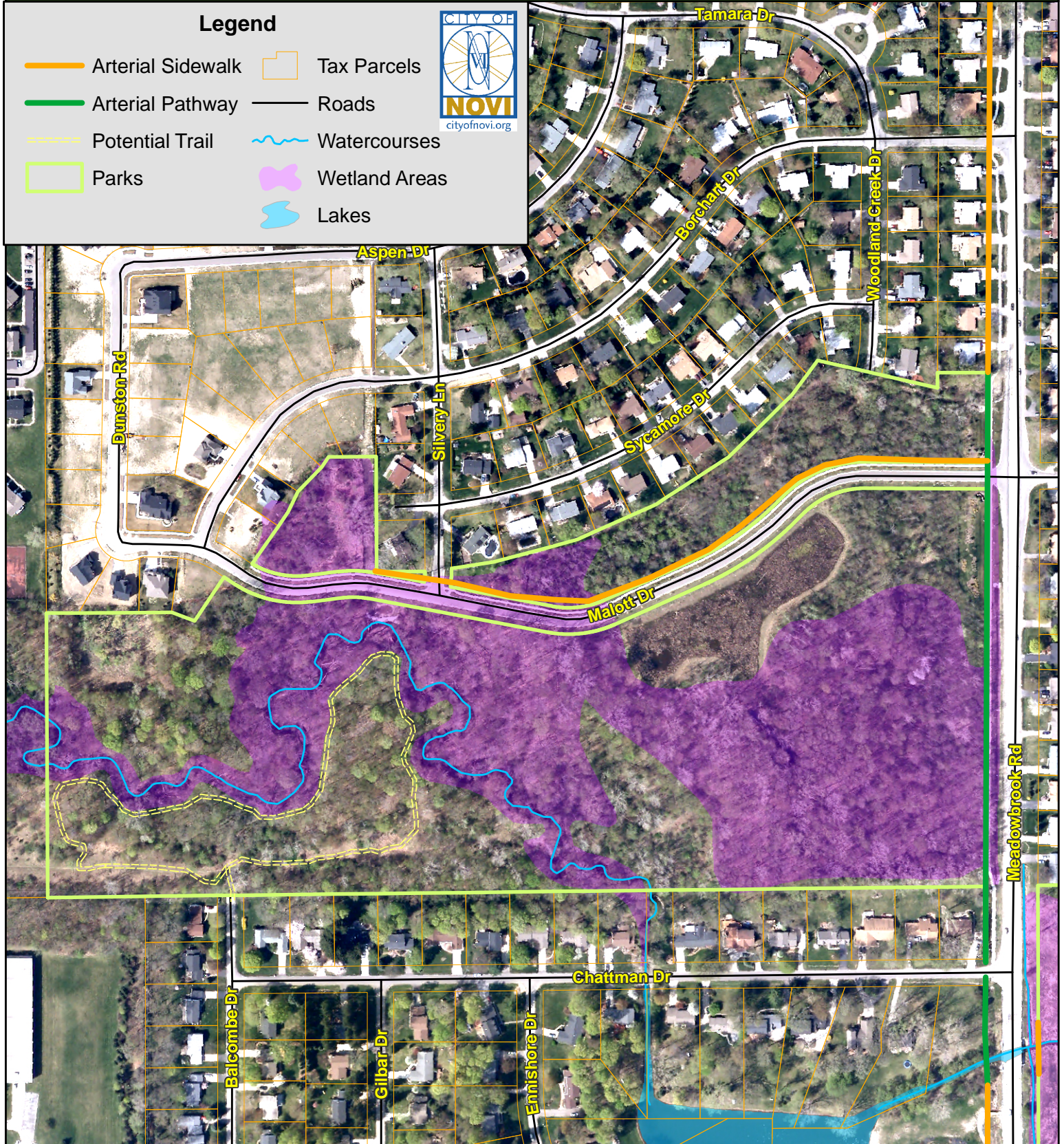


ORCHARD HILLS WEST POTENTIAL IMPROVEMENTS 2010 UPDATE

PATHWAY AND SIDEWALK PRIORITIZATION ANALYSIS AND PROCESS



Legend

- Arterial Sidewalk
- Arterial Pathway
- Potential Trail
- Parks
- Tax Parcels
- Roads
- ~ Watercourses
- ~ Wetland Areas
- ~ Lakes



CITY OF NOVI

DEPARTMENT OF COMMUNITY DEVELOPMENT
45175 W. TEN MILE ROAD
NOVI, MI 48375-3024
(248) 347-0415
MAP AUTHOR: CHRIS BLOUGH,
GIS MANAGER



1 INCH = 300 FEET MAP PRINT DATE: 11/10/2010

MAP INTERPRETATION NOTICE

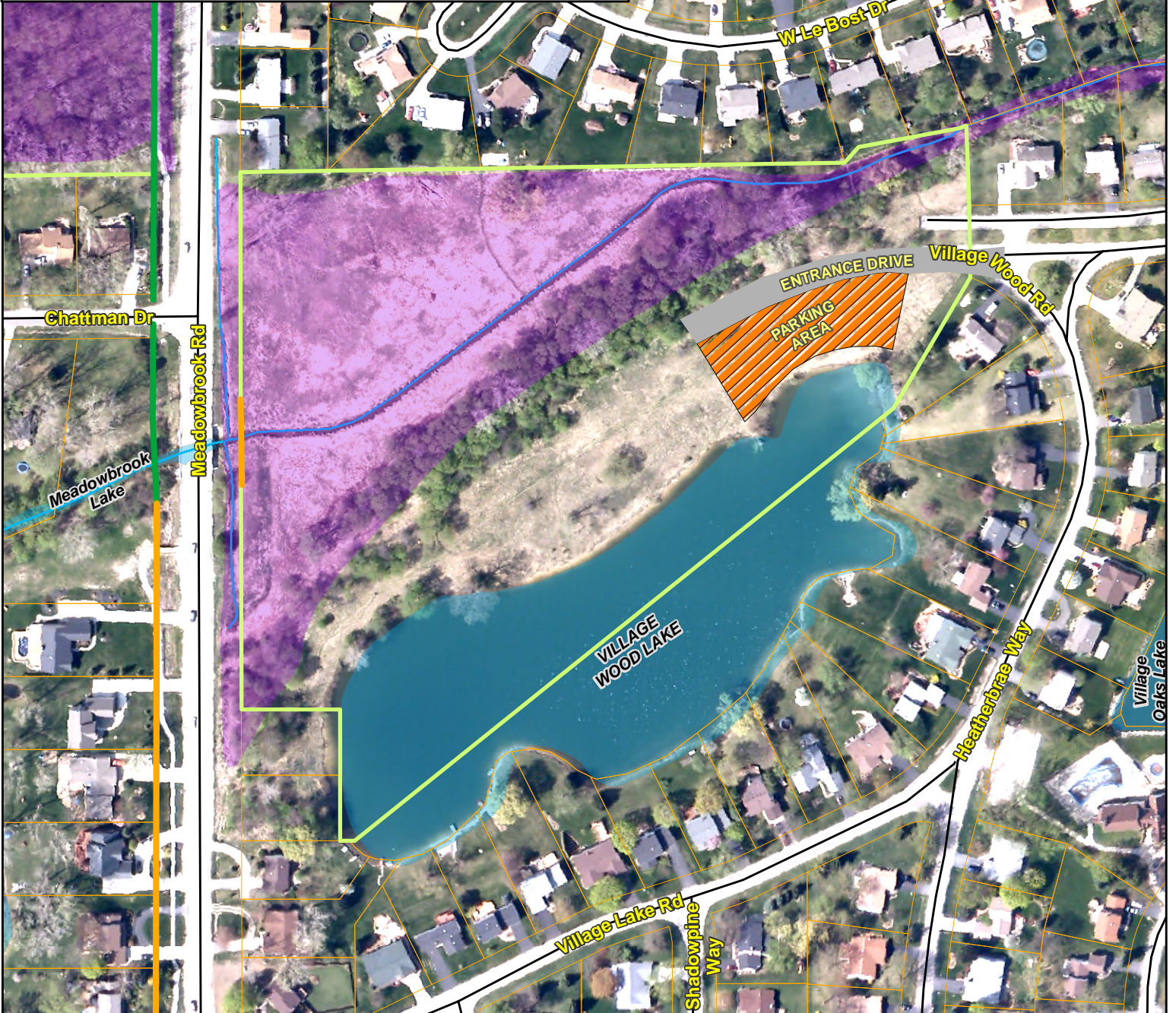
Map information depicted is not intended to replace or substitute for any official or primary source. This map was intended to meet National Map Accuracy Standards and use the most recent, accurate sources available to the people of the City of Novi. Boundary measurements and area calculations are approximate and should not be construed as survey measurements performed by a licensed Michigan Surveyor as defined in Michigan Public Act 132 of 1970 as amended. Pleas contact the City GIS Manager to confirm source and accuracy information related to this map.

VILLAGE WOOD LAKE PARK POTENTIAL IMPROVEMENTS 2010 UPDATE

PATHWAY AND SIDEWALK PRIORITIZATION ANALYSIS AND PROCESS

Legend

- Arterial Sidewalk
- Arterial Pathway
- Entrance Drive
- Parking Area
- Park Boundary
- Roads
- Tax Parcels
- Lakes
- Wetlands
- Watercourses



CITY OF NOVI

DEPARTMENT OF COMMUNITY DEVELOPMENT
45175 W. TEN MILE ROAD
NOVI, MI 48375-3024
(248) 347-0415
MAP AUTHOR: CHRIS BLOUGH,
GIS MANAGER



1 INCH = 200 FEET

MAP PRINT DATE: 11/10/2010

MAP INTERPRETATION NOTICE

Map information depicted is not intended to replace or substitute for any official or primary source. This map was intended to meet National Map Accuracy Standards and use the most recent, accurate sources available to the people of the City of Novi. Boundary measurements and area calculations are approximate and should not be construed as survey measurements performed by a licensed Michigan Surveyor as defined in Michigan Public Act 132 of 1970 as amended. Please contact the City GIS Manager to confirm source and accuracy information related to this map.